



Easy Chess Puzzle # 0105

By

G Bud Games
<https://gbud.in>

January 14, 2022

Contents

Easy Chess puzzle # 0105 - Use opponent's mistake	3
Easy chess puzzle 0105	3
Solution to easy chess puzzle 0105	4
Solution 1	4
Right moves for the solution to the easy chess puzzle 0105	6
Explanation for the moves	6
Categories of easy chess puzzle 0105	6
easy chess puzzle 0105 chart	7
How to view the solution to easy chess puzzle 0105	9
How to get help for moves in the easy chess puzzle 0105	10
Play chess for free	11

List of Figures

1	Solve this easy chess puzzle 0105. Use opponent's mistake @ https://gbud.in/gbvtbn1	3	
2	Solve this chess puzzle online with solution @ https://gbud.in/gbvtbn1	3	
3	Initial board position of easy chess puzzle 0105	4	
4	Nxe5	5	
5	Qxd1#	5	
6	easy chess puzzle 105 chart 1	7	
7	easy chess puzzle 105 chart 2	8	
8	easy chess puzzle 105 chart 3	8	
9	easy chess puzzle 105 chart 4	9	
10	Click the solution button to view solutions @ https://gbud.in/gbvtbn1	9	
11	Click the help button to get help on next move @ https://gbud.in/gbvtbn1	10	
12	Solve more easy puzzles @ https://gbud.in/chsezpz	10	
13	Solve other puzzles @ https://gbud.in/chsgppz	10	
14	Play chess online for free. Solve puzzles and play with friends	11	
15	Solve this puzzle online by scanning this QR code or go to the link below	12	

Easy Chess puzzle # 0105 - Use opponent's mistake

Solve this easy chess puzzle and improve your chess games through improvement of your chess strategies and chess tactics.

Puzzle No : 0105

Difficulty level : Easy

Description : Use opponent's mistake

Next Move : Black

Player level : Beginner

Short URL for puzzle : <https://gbud.in/gbvtbn1>

Easy chess puzzle 0105

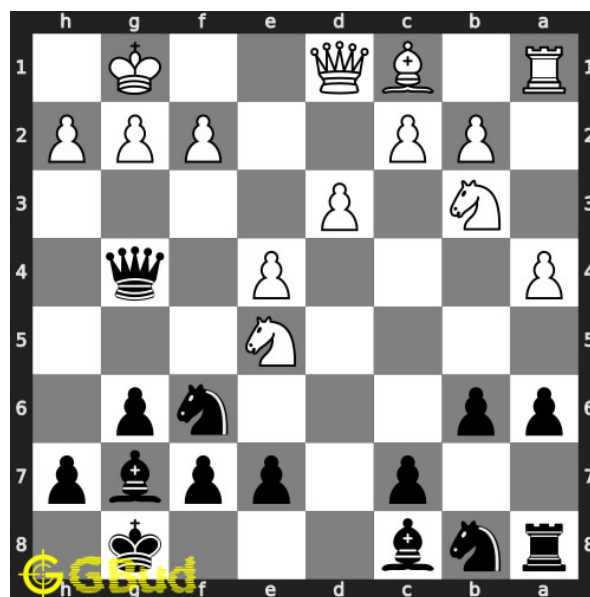


Figure 1: Solve this easy chess puzzle 0105. Use opponent's mistake @ <https://gbud.in/gbvtbn1>



Figure 2: Solve this chess puzzle online with solution @ <https://gbud.in/gbvtbn1>

Dont forget to check out [chess puzzles](#), [easy chess puzzles](#), [medium chess puzzles](#), [hard chess puzzles](#) and [chess puzzles collections](#) .

Solution to easy chess puzzle 0105

At this puzzle, next [move](#) is by [Black](#). The objective of the puzzle is to use opponent's mistake.

See the interactive solution at the [puzzle page](#)

Solution 1

Initial board position This is the initial board position of easy chess puzzle 0105.

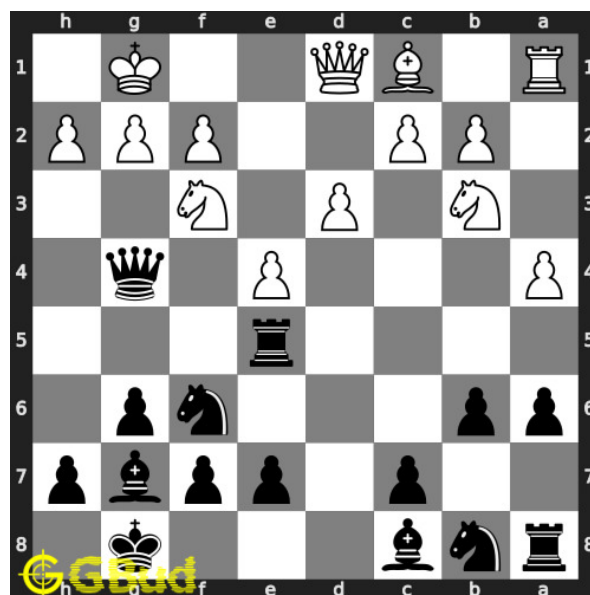


Figure 3: Initial board position of easy chess puzzle 0105

Move 1 Move by white

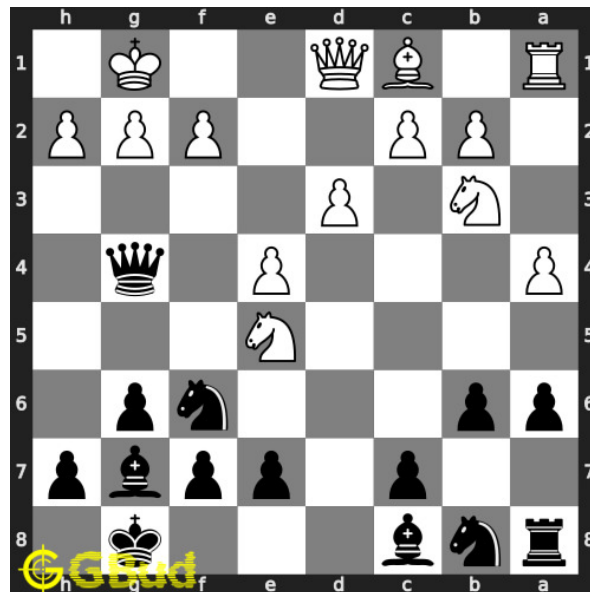


Figure 4: Nxe5

opponent made a mistake. they thought that they gained a hanging **rook** and attacking your **queen** by two **pieces**. however, they missed the point that their **queen** is not supported

Move 2 Move by black

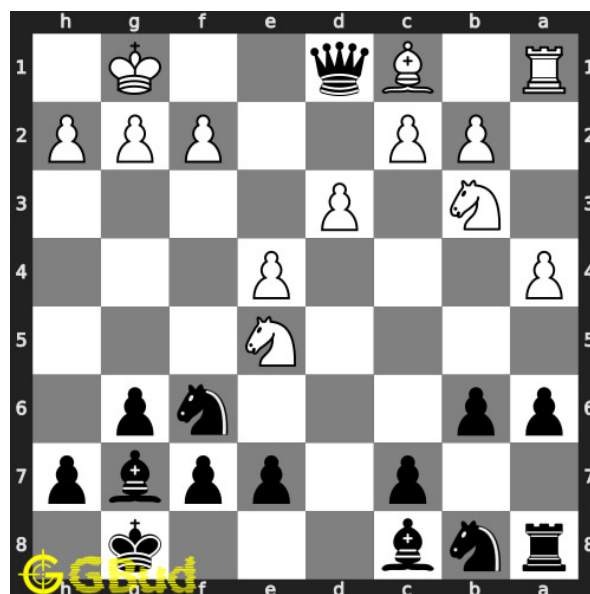


Figure 5: Qxd1#

your **queen captures** opponent's hanging **queen** and **checkmate**. you did mind **sacrifice** of the **rook** since you have a chance to **check mate**. this is called back-rank **mate**. this is how you can use opponent's mistake.

Right moves for the solution to the easy chess puzzle 0105

Based on the objective of the puzzle, you have to make the right moves. Following are the right moves

1. Qxd1#

Explanation for the moves

1. Nxe5 - Opponent made a mistake. They thought that they gained a hanging rook and attacking your queen by two pieces. However, they missed the point that their queen is not supported
2. Qxd1# - Your queen captures opponent's hanging queen and checkmate. You did mind sacrifice of the rook since you have a chance to checkmate. This is called back-rank mate. This is how you can use opponent's mistake.
3. For right move - You did not mind losing your rook and moved your queen wisely to have a checkmate. Keep up the good work
4. For wrong move - You missed the checkmate. Try again

Categories of easy chess puzzle 0105

This easy chess puzzle falls in these categories.

1. [Easy chess puzzles](#)
2. [Sacrifice puzzles in chess](#)
3. [Mate in 1 puzzles in chess](#)
4. [Endgame puzzles in chess](#)
5. [Mate pattern puzzles in chess](#)
6. [Queen puzzles in chess](#)

easy chess puzzle 0105 chart



Figure 6: easy chess puzzle 105 chart 1



Figure 7: easy chess puzzle 105 chart 2



Figure 8: easy chess puzzle 105 chart 3



Figure 9: easy chess puzzle 105 chart 4

How to view the solution to easy chess puzzle 0105

To view the [solution to this puzzle](https://gbud.in/blog/game/chess/easy-chess-puzzles/easy-chess-puzzle-0105.html), follow the steps given below

1. Go to the [puzzle page](https://gbud.in/blog/game/chess/easy-chess-puzzles/easy-chess-puzzle-0105.html)
2. Click the solution button (Key as shown [below](#)) to view the solution



Figure 10: Click the solution button to view solutions @ <https://gbud.in/gbvtbn1>

How to get help for moves in the easy chess puzzle 0105

To get help or the possible next moves in the puzzle, , follow the steps given below

1. Go to the [puzzle page](#)
2. Click the help button (exclamation mark as shown [below](#)) to get help or suggestion on next possible [move](#)



Figure 11: Click the help button to get help on next move @ <https://gbud.in/gbvtbn1>



Figure 12: Solve more easy puzzles @ <https://gbud.in/chsezpz>



Figure 13: Solve other puzzles @ <https://gbud.in/chsgppz>

Play chess for free

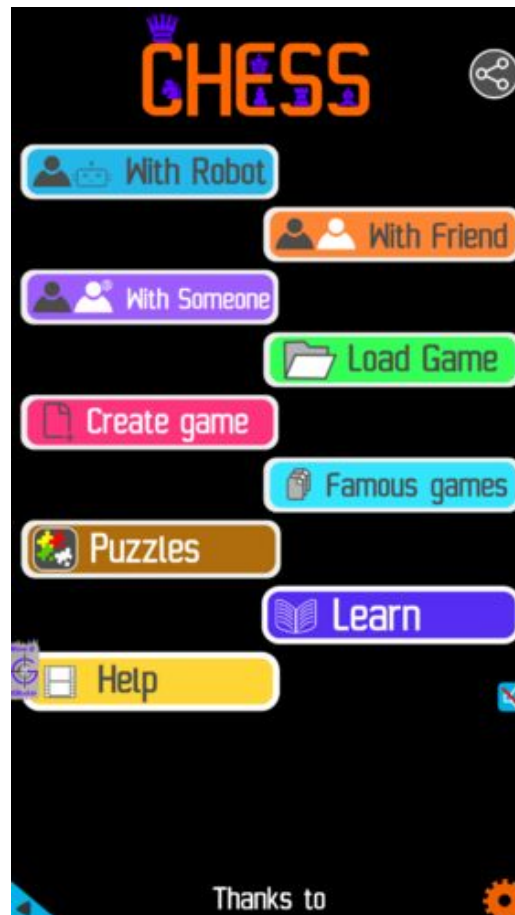


Figure 14: Play chess online for free. Solve puzzles and play with friends

Play chess for free at <https://gbud.in/chs>

We present you a platform to play chess online with friends for free. No need to install any app. You can play chess for free without registration or login.

Simple. You can do several chess related activities.

1. [solve chess puzzles](#)
2. [learn about chess](#)
3. [play chess with computer](#)
4. [play chess with friend](#)
5. [create your own chess games](#)

6. [fen viewer](#)
7. [fen editor](#)
8. [fen generator](#)
9. [pgn viewer](#)
10. [chess board editor](#)
11. [view famous chess games.](#)



Figure 15: Solve this puzzle online by scanning this QR code or go to the link below

<https://gbud.in/gbvtbn1>

Read the latest article on Easy Chess puzzle # 0105 - Use opponent's mistake by scanning this QR code or click the link

Previous article : « [Easy Chess puzzle # 0104 - Gain opponent's queen in 2 moves](#)

Next article : [Easy chess puzzles](#) »

[Back to top](#)

[Contact Us](#)